

Club Car

®

CARGO UTILITY VEHICLES



IR Ingersoll Rand

INDUSTRIAL-GRADE

**1000 | ONLY ONE
JOBS | CARRYALL.**



**INDUSTRY
BEST**

**2
YEAR
WARRANTY**

YOU HAVE A LONG LIST OF TASKS TO DO EVERY DAY, AND YOU NEED A RELIABLE WORK PARTNER.

You'll find one in Club Car's Carryall line of transportation and utility vehicles. Our cars help you move those ever-growing lists of tasks from the to-do list to the job-well-done list. Although you may have 1000 jobs, you need only one Carryall to help you complete them all.

A WARRANTY AS RELIABLE AS OUR VEHICLES.

Club Car's worldwide dealer network provides quality service and prompt support for your vehicles. Our vehicles are backed by the industry's best 2-year limited warranty. Our batteries are backed by a 4-year warranty. Our warranties represent our promise that you'll enjoy worry-free performance when you choose Club Car.



WE INVENTED THE **UTILITY** WORLD'S **FIRST** VEHICLE.

It's true. In 1970, as a strong player in the golf car market, we seized an opportunity for making a utility vehicle that could do what a small work truck would do, but at a fraction of the cost. We took it a step further by developing a new model from the ground up and making it rustproof and corrosion-resistant with an all-aluminum chassis, body and bed. The new model, dubbed the Carryall 2, was an instant hit with golf course operations and soon was recognized as a strong fit in commercial, industrial and other business applications.

▲ **JOB 001: DUMP TRUCK.**

The Carryall 2, the world's first utility vehicle, is still our most popular model. With an 800 lb (363.2 kg) bed load capacity, and an optional bed lift, old faithful showcases its can-do attitude.



▲ **JOB 995: AN ECONOMICAL WAY TO RUN SECURITY.**

The Carryall 242 is our most economical model. Its small profile makes it suitable for security detail in congested areas such as parking garages and its large tires help in climbing curbs or traversing rough terrain.



CARRYALL 242
KEY FEATURES:

- Best ground clearance
- Highest speed
- Best standard warranty

JOB 887: PROTECT AND SERVE. ▼

The Carryall 1, with a custom cab and an all-aluminum chassis and body, is ideal for protecting security from the elements while providing them a trusty work vehicle.



WORLD'S LARGEST SMALL-WHEEL VEHICLE MANUFACTURER.

Club Car makes the finest small wheel vehicles in the world. Safety, quality, innovation, and great value have been the driving force behind our business since 1958. Thanks to customers who have experienced the world's finest, Club Car has grown into the largest golf and commercial small-wheel vehicle manufacturer in the world. With more than 80 Club Car models — all assembled in the USA — we celebrated our 2,000,000th vehicle in 2010.



▲ JOB 110: PIPE FITTER'S DREAM COME TRUE.

Pipe fitters and other skilled craftsmen love the Carryall 1 vehicle's powerful Kawasaki engine and heavy-duty aluminum body and large bed, making it an excellent choice for harsh industrial environments.



▲ JOB 9: WIELD THE WELDER.

The Carryall 1 has the strength and dependability of a quality, seamless weld. Consider an optional trailer hitch for towing trailers on jobsites.



CARRYALL 1 KEY FEATURES:

- Tightest turning radius
- Rustproof body and frame
- Wide range of accessories and options

LARGEST PRODUCT LINE-UP: WE'RE COMMITTED TO OUR CUSTOMERS.

14 platforms. 27 commercial models. Gas. Electric. Diesel. 4x2s. 4x4s. Light duty, medium duty, or heavy duty. 2-, 4-, 6- or 8-passenger models. Up to 3/4-ton payload capacities. To sum it up, we have something for everyone which is one of the reasons we've grown to be the largest small wheel vehicle manufacturer in the world.



◀ JOB 83: STOKING THE AMBIANCE.

The Carryall 2 makes quick work of large jobs such as delivering firewood and lawn chairs for your next event on your property. Upgrade to a Carryall 2 Plus with 4-wheel brakes for heavier applications.

▲ JOB 619: PC DELIVERIES PDQ.

The Carryall 2 with a cab and industrial van box takes you places larger vans and trucks cannot, while keeping your valuables secure.



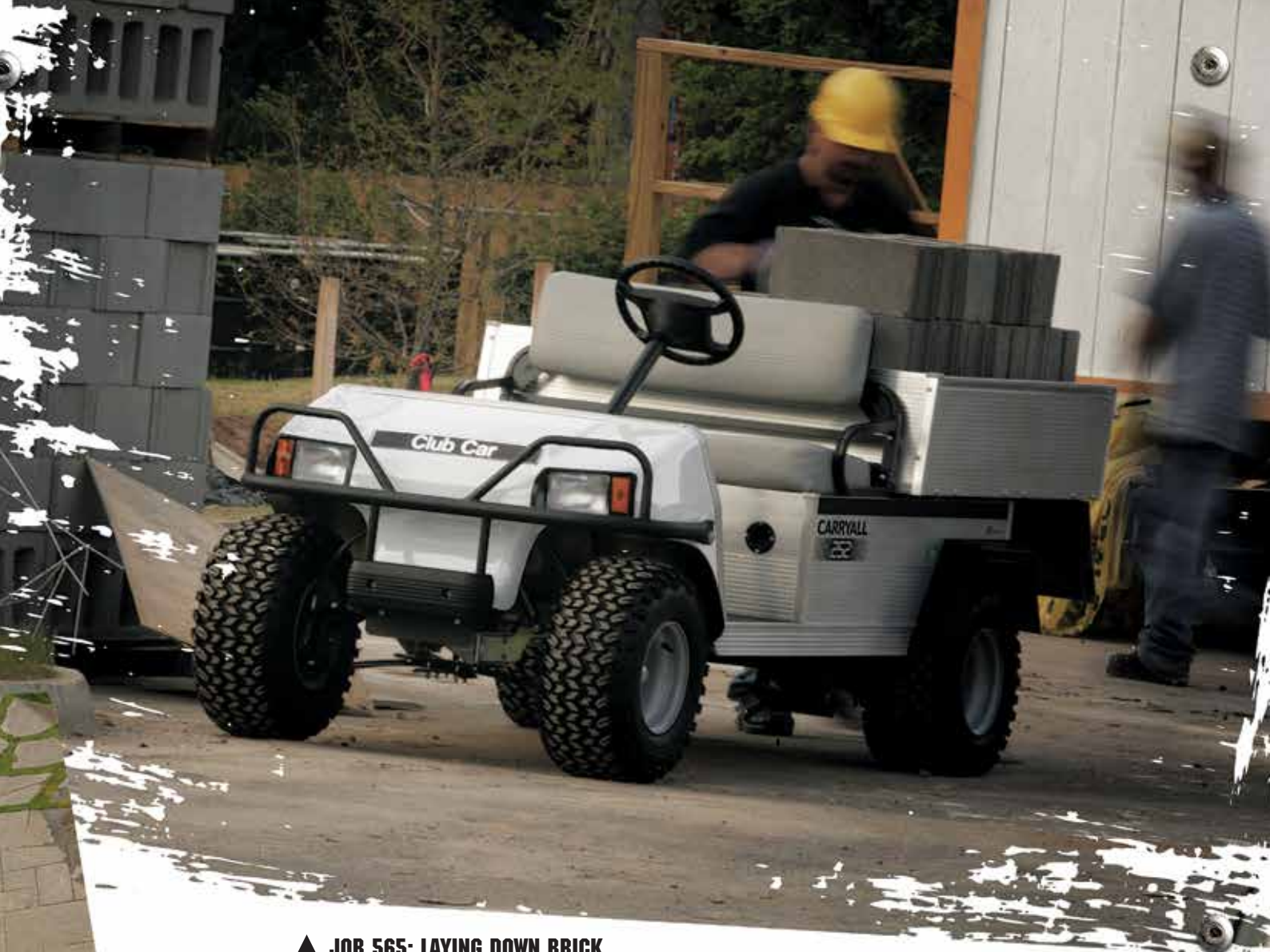
CARRYALL 2 KEY FEATURES:

- Tightest turning radius
- Most powerful electric powertrain
- Legendary reliability



▶ JOB 382: MOBILE MECHANIC. ▶

The Carryall 2, with best-in-class turning radius, is comfortable in congested, dirty environments such as industrial shops and manufacturing plants. Outfit it with custom solutions tool boxes and ladder rack to make the ideal mobile work truck.



▲ **JOB 565: LAYING DOWN BRICK.**

The Carryall 252 4x2 is a solid performer for construction sites. It boasts a rugged heavy-duty, all-aluminum body to take on formidable tasks, has the optimal ground clearance and turning radius to navigate over large obstacles, and its rough terrain tires resist nails and other sharp objects.

◀ **JOB 108: STAGING EVENTS.**

Club car specializes in vehicles for catering and housekeeping. Outfit a Carryall 2 with a customized van box and canopy top to make your next event go flawlessly.



CARRYALL 252
KEY FEATURES:

- Most ground clearance in its class
- Most available options
- Most powerful electric powertrain





▲ **JOB 62: PAINTING THE TOWN.**

Convert a Carryall 6 into a serious work truck with a cab, custom solutions van box and custom ladder rack. Less expensive than a van or a pickup truck, it has a 3/4-ton (681.0 kg) vehicle capacity, and can securely stow your painting, construction, HVAC, or electrical equipment.



CARRYALL 6
KEY FEATURES:

- 3/4-ton (681.0 kg) vehicle capacity
- Large under-seat storage area
- Nearly 6 ft (179.1 cm) long bed

JOB 444: THE SPORTS AUTHORITY. ▼

The Carryall 6 is our most popular ambulance platform for schools and municipalities. It's ideal for carrying two trainers and all their gear into small, cramped spaces.



CUSTOM SOLUTIONS: IF YOU CAN IMAGINE IT, WE CAN BUILD IT.

Custom Solutions is another Club Car innovation. We've been building dreams longer than anyone and have a seasoned team of engineers and craftsmen that will design and build whatever you dream up. We've done it all, from creating a hydraulic scissor-lift bed that serves as a deer hunting stand to designing and building custom van boxes and ambulances. Our solutions are original equipment certified, so you have the peace of mind that your vehicle is warranted and manufactured with the quality, safety, and efficiency you expect from Club Car.



JOB 939: TURF-FRIENDLY, BRUTE. ▲

If you need a heavy-duty, yet turf-friendly vehicle, then a Carryall 295 with 2-wheel drive is an optimum solution. Take advantage of more work with its large turf tires, massive 3/4-ton (680.4 kg) payload capacity option and 19 mph (30.6 km/h) speed.



▲ JOB 180: STOP AIR, NOISE, AND ENVIRONMENTAL POLLUTION.

The quiet, electric Carryall 6, outfitted with optional oversized bin, hydraulic dump, heavy-duty brush guard and canopy top, has zero emissions and is popular around parks, municipalities, and college campuses.



**NEW
2012**

CARRYALL 295 2-WD KEY FEATURES:

- 20.0 hp (15.0 kW) gas engine
- Nearly 1-ton (861.8 kg) vehicle capacity option
- Tow 1,300 lb (589.7 kg)
- 4-wheel disc brakes
- Speed at 19 mph (30.6 km/h)

BEST-IN-CLASS RELIABILITY: THE WORLD'S NO. 1 UTILITY VEHICLE BRAND.

Count on many years of worry-free performance when you choose Club Car. We're so confident in the quality of our products, Carryall vehicles are backed by the industry's best 2-year limited warranty and supported by the industry's largest worldwide dealer network.

But don't take our word for it. Check out the numbers. Zero emissions . . . Number one in worldwide sales . . . More than eighty models to choose from . . . Millions of happy customers. All this in one name you can trust . . . Club Car.



CARRYALL 295^{4x4} KEY FEATURES:

- Up to 3/4-ton (657.7 kg) total vehicle capacity
- Tow 800 lb (362.9 kg)
- IntelliTrak™ — Intelligent 4-wheel drive automatic engagement
- Intellitach™ — optional quick-changing tool attachment system

▲ JOB 107: SERIOUS SECURITY.

With its heavy-duty chassis, 12 inches (305 mm) of chassis clearance and a top speed of 25 mph (40.2 km/h), the Carryall 295 with 4-wheel drive is easily seen, ideal for articulating over large obstacles, and can quickly cover a lot of ground.

JOB 322: SAVING LIVES, WHEREVER NEEDED. ►

With unstoppable power and the space to carry all of your lifesaving gear, a Carryall 295SE Ambulance with 4-wheel drive is a best-in-class solution. Engage our Custom Solutions department so you can outfit one exactly the way you want it.



▲ JOB 751: A HELPING HAND FOR ANY NURSERY.

You will love the Carryall 295 4x4 with IntelliTrak™ quick attachment system. Save time and money with an all-in-one utility vehicle, plow, forklift, and bucket loader solution.



CARRYALL 295SE^{4x4}
KEY FEATURES:

- Over 3/4-ton (725.8 kg) total vehicle capacity
- Tow 800 lb (362.9 kg)
- IntelliTrak™ — Intelligent 4-wheel drive automatic engagement
- XXL chassis which provides seating for 4 plus lots of cargo room

INDUSTRY-LEADING INNOVATIONS: BEGINNING IN 1970.

For nearly one-half a century, Club Car has led the way in the utility vehicle industry. It all began when we invented the industry's first utility vehicle in 1970. From there, the fire sparked a host of other industry innovations too. Now, we are the largest manufacturer of small 4-wheel vehicles in the industry with the widest available product range.



Sustainability. Club Car is committed to the reduction of waste and environmental emissions. *Going Green* starts in our factory, from our aggressive recycling programs to returnable packaging for incoming components. Our green solutions help you reduce your carbon footprint significantly and may help your company save thousands each year in fuel costs.

- *Our powerful, electric powertrains produce zero-emissions.*
- *Our gasoline and diesel powertrains are significantly more fuel-efficient than pickup trucks and vans they replace.*
- *Our gasoline engines are EPA-certified and diesel is EPA Tier 4-compliant.*
- *Environmentally-friendly, low-toxicity coolants and brake fluids in our 4x4 vehicles.*

Strength. We're the only major manufacturer in the industry that builds vehicles on aircraft-alloy aluminum frames. Our exclusive, rustproof frames have been tested to be up to 3 times stronger than competitors' steel frames and support a total vehicle capacity of nearly one ton (861.8 kg).

- *Our I-beam frames and ladder-style square tube frames on our 4x4 provide incredible strength with low weight.*
- *Our rigid, aluminum and steel cargo boxes are designed to handle the years of hard work and abuse.*
- *When compared to ATV-style suspensions used in demanding work environments, Carryall 295 vehicles have a superior suspension system using solid steel, double a-arms with coil over shocks on the front and an heavy-duty 4-link rear end.*

Comfort & Convenience. From fueling or charging the car to periodic vehicle maintenance, we design simplicity and intelligent functionality into our vehicles.

- *For gas and diesel models, outside-fill fuel caps and easy engine access make operation and service simple.*
- *For our electric vehicles, speed caps or an optional single-point watering system make battery service easy.*
- *Remote oil filters on our 4x4 products make changing them a breeze.*
- *Large dashboards on our models provide quick access and ample room for all your tools or personal items.*
- *The tilt steering wheel and adjustable driver seat on our 4x4 vehicles gives you best-in-class comfort.*



Safety. The safety of your employees and customers is your concern and ours. We engineer our vehicles with features that meet or exceed industry standards.

- *Zero-speed detect on our electric vehicles controls the vehicle speed should the vehicle inadvertently roll away.*
- *Roll-Over Protective Structure (ROPS) and Falling Object Protective Structure (FOPS) are available with our cab and 4x4 systems.*
- *We offer high impact acrylic or tempered safety glass windshields.*
- *Side hip restraints are standard on all models. 2-point and 3-point seat belts are standard or optional depending on the model.*

Reliability. Count on our legendary reliability and durability to meet your operation's day-to-day needs.

- *Our industrial-grade engines feature heavy-duty components for lifespans measured in years, and for many scenarios, in decades.*
- *We provide clutches that are finely balanced in-house along with synchromesh transmissions to reduce vibration and wear and tear.*
- *Our heavy-duty electronic controllers and motors deliver amazing low end torque and 21 peak horsepower (15.7 kW) year after year.*
- *Our automotive and marine-grade materials make cleaning easy and help retain your investments value.*
- *Just like an automobile, our vehicles are designed to draw in cool, clean air from the front chassis, which passes through high capacity filtration systems for reduced filter maintenance.*

Innovation. Club Car's long history of innovations are deeply rooted in an effort to solve our customers' needs. From the onset, we offered the first 4-cycle engines, self-adjusting rack and pinion steering, independent front suspension and synchromesh transmissions. Customer feedback continues to drive our passion for innovation.

- *Our electric vehicles feature advanced diagnostics, with customized performance, speed, and regenerative braking.*
- *Our speed-key option, available on IQ Plus electric vehicles, control the performance and speed of the vehicle based on the user.*
 - *IntelliTrak, the first fully-automatic on-demand 4-wheel drive system, was pioneered by Club Car. With the widest transmission ratio in the industry, and the ability to react to changing traction in the blink of an eye, IntelliTrak is the most user friendly 4x4 system in the industry.*
 - *IntelliTrak sealed CVT protects your components from debris and deep water and cools the belt system for best-in-class life.*
 - *The literally ground-breaking Intellitach was the first quick-change implement system from a utility vehicle manufacturer.*



SPECIFICATIONS



CARRYALL 242 (2WD)	CARRYALL 1 (2WD)
<ul style="list-style-type: none"> Rustproof, aircraft-grade aluminum chassis Roto-molded plastic, tilt cargo box with 300 lb (136.1 kg) bed load capacity 20" all-terrain tires Pedal-start conserves fuel Fits in full-size pickup truck bed 	<ul style="list-style-type: none"> Automotive painted finish over impact-resistant ABS front and ArmorFlex rear body Headlights, sport steering wheel, dual cupholders, and passenger-side dash pocket Tightest turning diameter in its class
<ul style="list-style-type: none"> Rustproof, aircraft-grade aluminum chassis and cargo box Industry's best 2-year warranty 800 lb (363.2 kg) vehicle capacity Tilt cargo box with 300 lb (136.1 kg) bed load capacity Independent front suspension with self-adjusting rack and pinion steering 	<ul style="list-style-type: none"> Dent-resistant, Armorflex® front body for fade-resistant color Ergonomic dash-mounted shifter Dual dash compartments Side fuel fill on gas model Pedal-start conserves fuel Tightest turning diameter in its class

(-) Not Available

SPECIFICATION CATEGORY	ELECTRIC	GAS	ELECTRIC	GAS
Engine (**)	-	Kawasaki 4-cycle, OHV, 351 cc, single-cylinder, air-cooled, pressure-lubricated, spin-on oil filter	-	Kawasaki 4-cycle, OHV, 351 cc, single-cylinder, air-cooled, pressure-lubricated, spin-on oil filter
Transmission	Direct Drive	CVT	Direct Drive	CVT
Drive Motor	48-volt shunt/sepex	-	48-volt IQ® sepex	-
Horsepower	3.2 hp (2.4 kW) @ 2,400 RPM 10 hp (7.5 kW) @ 1,125 RPM (peak)	10.4 hp (7.8 kW) rated @ 3600 RPM per SAE J1349	3.2 hp (2.4 kW) @ 2,400 RPM 10 hp (7.5 kW) @ 1,125 RPM (peak)	10.4 hp (7.8 kW) rated @ 3600 RPM per SAE J1349
Governor	-	Automatic ground speed sensing	-	Automatic ground speed sensing
Governed RPM	-	-	-	3050 +/- 30
Drive Unit	12.3:1 direct-drive axle, double-reduction helical gear	Unitized transaxle, helical gears: 11.8:1 forward, 17.1:1 reverse	12.3:1 direct-drive axle, double-reduction helical gear	Unitized transaxle, helical gears: 11.8:1 forward, 17.1:1 reverse
Electrical System	Eight 6-volt Standard: 115 min @ 75 amps Heavy-duty: 145 min @ 75 amps	12-volt, 500 cca, 105 min reserve	Eight 6-volt Standard: 115 min @ 75 amps Heavy-duty: 145 min @ 75 amps	12-volt, 500 cca, 105 min reserve
Ignition	-	Electronic with electronic limiter	-	Electronic with electronic limiter
Charger	Automatic, computer-controlled 48-volt DC, 17 amp, UL and CUL listed	-	Automatic, computer-controlled 48-volt DC, 17 amp, UL and CUL listed	-
Controller	250 amp solid state	-	250 amp solid state	-
Key- or Pedal-Start	Pedal		Pedal	
Steering	Self-adjusting rack and pinion		Self-adjusting rack and pinion	
Front Suspension	Independent leaf spring with dual hydraulic shocks		Independent leaf spring with dual hydraulic shocks	
Rear Suspension	Independent leaf spring with dual hydraulic shocks		Independent leaf spring with dual hydraulic shocks	
Brakes	Rear-wheel, mechanical drum		Rear-wheel, mechanical drum	
Park Brake	Foot-operated, multi-lock		Foot-operated, multi-lock	
Stabilizer Bar	No	No	No	No
Frame Chassis	Aluminum I-beam		Aluminum I-beam	
Front Body	ABS with automotive paint		ArmorFlex®	
Rear Body	ArmorFlex®		All aluminum	
Body color	Automotive finish		Automotive finish	
Light Package	Headlights standard		Optional	
Trailer Hitch	No		Optional	
Tires	20 x 10-8, 4-ply rated, All-trail II		18 x 8.50-8, 4 ply rated, premium tread	
Instrumentation	Battery capacity indicator, Battery warning light	Electronic fuel gauge/hour meter, low-oil warning light	Battery capacity indicator, Battery warning light	Electronic fuel gauge/hour meter, low-oil warning light
Cargo Bed Size	27.5 x 43.5 x 11 in 65.3 x 110.5 x 27.9 cm		37.6 x 45.1 x 9.3 in (9.1 ft ³) 95.6 x 114.6 x 23.5 cm	
Flat Bed Size	-		35.8 x 44.3 in (90.8 x 112.4 cm)	
Bed Height	-		27.5 in (69.9 cm)	
Bed Capacity	300 lb (136.1 kg)		300 lb (136.1 kg)	
Total Vehicle Capacity	800 lb (363.2 kg)		800 lb (363.2 kg)	
Seating Capacity	2 (with Cargo Box) or 4 (with Fixed Rear Seat)		2	
Overall Length	101 in (257 cm)		103.5 in (262.9 cm)	
Overall Width	53 in (135 cm) w/Nerf bar		48 in (121.9 cm)	
Overall Height	48 in (121.9 cm)		48 in (121.9 cm)	
Wheelbase	65 in (165.1 cm)		65.5 in (166.4 cm)	
Ground Clearance	5.5 in (14 cm)		4.5 in (11.4 cm)	
Fuel Tank Capacity	-	7 gal (26 L)	-	5 gal (19 L)
Tread	34 in/38 in (86.4 cm/96.5 cm)		34.5 in/38.5 in (87.6 cm/97.8 cm)	
Dry Weight (Less Batteries)	572 lb (260 kg)	805 lb (365 kg)	530 lb (240.6 kg)	658 lb (298.7 kg)
Outside Radius Circle	?		17.5 ft (5.3 m) dia	
Turning Radius	8.75 ft (2.7 m)		8.4 ft (2.6 m)	
Intersecting Aisle Radius	?		72 in (182.9 cm)	
Speed Range	17-19 mph (27.4-30.6 km/h)		8-19 mph (12.8-24.1 km/h) 12-15 mph (19.3-24.1 km/h)	
Vehicle Warranty	2-year limited consumer; 1-year limited commercial		2-year, limited; 4-year limited battery warranty	

** Engine horsepower and torque specifications are provided by the engine manufacturer. Actual horsepower and torque in use may differ and are dependent on environmental conditions as well as maintenance condition of the engine.



CARRYALL 2 / 2 PLUS (2WD)

CARRYALL 6 (2WD)

- Rustproof, aircraft-grade aluminum chassis and cargo box
- Industry's best 2-year warranty
- 1200 lb (544.8 kg) vehicle capacity
- Tilt cargo box with 800 lb (363.2 kg) bed load capacity
- Heavy-duty front bumper and dent-resistant, Armorflex® front body

- Side fuel fill on gas model
- Heavy-duty trailer hitch standard
- Pedal-start conserves energy
- Ergonomic dash mounted shifter
- Key-start for Carryall 2 Plus
- Carryall 2 Plus standard features include heavy-duty front suspension and 4-wheel mechanical drum brakes

- Rustproof, aircraft-grade aluminum chassis and body
- Industry's best 2-year warranty
- 1500 lb (681.0 kg) vehicle capacity
- Nearly 6 ft (179.1 cm) long bed with 1000 lb (499.4 kg) bed load capacity
- Independent front suspension with self-adjusting rack and pinion steering

- Heavy-duty front bumper is standard
- Dent-resistant, Armorflex® front body for fade-resistant color
- Ergonomic dash mounted shifter
- Pedal-start conserves energy
- Side fuel fill on gas model

ELECTRIC		GAS		ELECTRIC		GAS	
-		Kawasaki 4-cycle, OHV, 351 cc, single-cylinder, air-cooled, pressure-lubricated, spin-on oil filter		-		Kawasaki 4-cycle, OHV, 351 cc, single-cylinder, air-cooled, pressure-lubricated, spin-on oil filter	
Direct Drive 48-volt IQ Plus® sepex		CVT -		Direct Drive 48-volt IQ Plus® sepex		CVT -	
3.7 hp (2.8 hp) @ 3,400 RPM 21 hp (15.7 kW) @ 2,000 RPM (peak)		10.4 hp (7.8 kW) rated @ 3600 RPM per SAE J1349		3.7 hp (2.8 hp) @ 3,400 RPM 21 hp (15.7 kW) @ 2,000 RPM (peak)		10.4 hp (7.8 kW) rated @ 3600 RPM per SAE J1349	
-		Automatic ground speed sensing 3170 +/- 30		-		Automatic ground speed sensing 3050 +/- 30	
12.3:1 direct-drive axle, double-reduction helical gear		Unitized transaxle, helical gears: 11.8:1 forward, 17.1:1 reverse		12.3:1 direct-drive axle, double-reduction helical gear		Unitized transaxle, helical gears: 11.8:1 forward, 17.1:1 reverse	
Eight 6-volt Standard: 115 min @ 75 amps Heavy-duty: 145 min @ 75 amps		12-volt, 500 cca, 105 min reserve		Eight 6-volt; Standard: 115 min. @ 75 amps Heavy-duty: 145 minutes @ 75 amps		12-volt, 500 cca, 105 min reserve	
-		Electronic with electronic limiter		-		Electronic with electronic RPM limiter	
Automatic, computer-controlled 48-volt DC, 17 amp, UL and CUL listed		-		Automatic, computer-controlled 48-volt DC, 17 amp, UL and CUL listed		-	
500 amp solid state		-		500 amp solid state		-	
Pedal		Pedal / Key (2 Plus)		Pedal		Key	
Self-adjusting rack and pinion				Self-adjusting rack and pinion			
Independent leaf spring with dual hydraulic shocks / Heavy-duty upgrade (2 Plus)				Independent leaf spring with dual hydraulic shocks			
Independent leaf spring with dual hydraulic shocks				Independent leaf spring with dual hydraulic shocks			
Rear-wheel mechanical drum / 4-wheel mechanical drum (2 Plus)				4-wheel mechanical drum			
Foot-operated, multi-lock				Foot-operated, multi-lock			
No		Yes		No		Yes	
Aluminum I-beam		Aluminum I-beam		Aluminum I-beam		Aluminum I-beam	
ArmorFlex®		ArmorFlex®		ArmorFlex®		ArmorFlex®	
All aluminum		All aluminum		All aluminum		All aluminum	
Automotive finish		Automotive finish		Automotive finish		Automotive finish	
Optional		Optional		Headlights, tail lights, brake lights, and horn standard		Optional	
Standard		Standard		Standard		Standard	
18 x 8.5-8, 6-ply rated, premium tread front, extra traction rear				18 x 8.5-8, 6-ply rated, premium tread front, extra traction rear			
Battery capacity indicator, Battery warning light		Electronic fuel gauge/hour meter, low-oil warning light		Battery capacity indicator, Battery warning light		Electronic fuel gauge/hour meter, low-oil warning light	
48.8 x 49.8 x 10.9 in (15.3 ft³) 123.8 x 126.4 x 27.6 cm				70.5 x 45.1 x 9.3 in (17.1 ft³) 179.1 x 114.6 x 23.5 cm			
46.9 x 48.3 in (119.1 x 122.7 cm)				67.6 x 44.2 in (171.8 x 112.2 cm)			
27.5 in (69.9 cm)				27 in (68.6 cm)			
800 lb (363.2 kg)				1,000 lb (499.4 kg)			
1,200 lb (544.8 kg)				1,500 lb (681 kg)			
2				2			
111 in (281.9 cm)				134 in (340.4 cm)			
50 in (127 cm)				49.3 in (125.2 cm)			
48 in (121.9 cm)				48 in (121.9 cm)			
77.5 in (196.9 cm)				98.5 in (250.2 cm)			
4.5 in (11.4 cm)				4.5 in (11.4 cm)			
-		5 gal (19 L)		-		5 gal (19 L)	
34.5 in/38.5 in (87.6 cm/97.8 cm)		34.5 in/38.5 in (87.6 cm/97.8 cm)		34.5 in/38.5 in (87.6 cm/97.8 cm)		34.5 in/38.5 in (87.6 cm/97.8 cm)	
767 lb (347.9 kg)		724 lb (328.7 kg)		743 lb (337.3 kg)		868 lb (394.1 kg)	
20.7 ft (6.3 m) dia		20.7 ft (6.3 m) dia		24.7 ft (7.5 m) dia		24.7 ft (7.5 m) dia	
10 ft (3 m)		10 ft (3 m)		12 ft (3.7 m)		12 ft (3.7 m)	
77 in (195.6 cm)		77 in (195.6 cm)		90 in (228.6 cm)		90 in (228.6 cm)	
5-17 mph (8-27.4 km/h)		14-16 mph/16-18 mph (22.5-25.7/25.7-29.0 km/h)		5-17 mph (8-27.3 km/h)		14-16 mph (22.5-25.7 km/h)	
2-year, limited; 4-year limited battery warranty		2-year, limited; 4-year limited battery warranty		2-year limited, 4-year limited battery warranty		2-year limited, 4-year limited battery warranty	

SPECIFICATIONS



CARRYALL 252 (2WD)	CARRYALL 295 (2WD)	CARRYALL 295 INTELLITACH (4WD)
<p>Same features as the Carryall 2 in addition to:</p> <ul style="list-style-type: none"> Differential guard and 11.0 in (27.9 cm) of ground clearance under foot platform to handle rough terrain 	<ul style="list-style-type: none"> Headlights, heavy-duty brush guard, and dent-resistant Armorflex® front body 	<p>Same features as the Carryall 295 4WD in addition to:</p> <ul style="list-style-type: none"> ROPS with 3-point seat belts standard 1,700 lb (771.1 kg) total vehicle capacity Scoop and haul 500 lb (226.8 kg) of gravel using our Intellitach™ rapid implement change out tool system Bucket seats only

(-) Not Available

SPECIFICATION CATEGORY	ELECTRIC	GAS	GAS	DIESEL
Engine (**)	-	Kawasaki 4-cycle, OHV, 351 cc, single-cylinder, air-cooled, pressure-lubricated, spin-on oil filter	Kawasaki 4-cycle, air-cooled, OHV, 675 cc, twin-cylinder industrial grade with full-pressure, spin-on oil filter	Kubota D722, liquid-cooled 719 cc, 3-cylinder industrial grade with full-pressure, spin-on oil filter
Transmission	Direct Drive	CVT	Wide ratio CVT; 3.7:1 low, 0.59:1 high	Wide ratio CVT; 3.7:1 low, 0.59:1 high
Front/Rear Differential	-	-	Automatic locking rear differential	IntelliTrak™ Automatic 4-wheel Drive
Drive Motor	48-volt IQ Plus® sepex	-	-	-
Horsepower	3.7 hp (2.8 kW) @ 3,400 RPM 21 hp (15.7 kW) @ 2,000 RPM (peak)	10.4 hp (7.8 kW) rated @ 3600 RPM per SAE J1349	20.1 hp (15.0 kW) rated @ 3400 RPM per SAE J1349	20.0 hp (15.0 kW) rated @ 3600 RPM per SAE J1995
Governor	Automatic ground speed sensing		Automatic ground speed sensing	Automatic ground speed sensing
Governed RPM	-	2900 +/- 30	-	-
Drive Unit	12.3:1 direct-drive axle, double-reduction helical gear	Unitized transaxle, helical gears: 11.8:1 forward, 17.1:1 reverse	5.39:1 forward, 7.79:1 reverse, 3.3:1 differential	5.39:1 forward, 7.79:1 reverse, 3.3:1 differential
Electrical System	Eight 6-volt; Standard: 115 min. @ 75 amps Heavy-duty: 145 minutes @ 75 amps	12-volt, 500 cca, 105 min reserve	12-volt, 500 CCA	12-volt, 500 CCA
Ignition	-	Electronic with electronic RPM limiter	Transistorized magneto	Compression
Charger	Automatic, computer-controlled 48-volt DC, 17 amp, UL and CUL listed	-	-	-
Controller	500 amp solid state	-	-	-
Key or Pedal Start	Pedal		Key	Key
Steering	Self-adjusting rack and pinion		Rack and pinion with Tilt Steering	Rack and pinion with Tilt Steering
Front Suspension	Independent leaf spring with dual hydraulic shocks		Independent double A-arms with coil-over shocks	Independent double A-arms with coil-over shocks
Rear Suspension	Independent leaf spring with dual hydraulic shocks		Semi-independent 4-link solid axle	Semi-independent 4-link solid axle
Brakes	4-wheel mechanical drum	4-wheel mechanical drum	4-wheel, hydraulic disc	4-wheel, hydraulic disc
Park Brake	Foot-operated, multi-lock		Automotive style	Automotive style
Stabilizer Bar	No	Yes	-	-
Frame Chassis	Aluminum I-beam		Tubular aluminum	Tubular aluminum
Front Body	ArmorFlex®		GE Geloy high-impact, scratch-resistant, injection molded color	GE Geloy high-impact, scratch-resistant, injection molded color
Rear Body	All aluminum		All aluminum	All aluminum
Body color	Automotive finish		Automotive finish	Automotive finish
Light Package	Headlights standard		Headlights standard	Headlights standard
Trailer Hitch	Standard		2 in rear receiver	2 in rear receiver
Tires	22 x 11.00-10, 6-ply rated, Heavy-duty All-Terrain tread		4-ply Turf; Front 23 x 10.5 x 12, Rear 24 x 10.5 x 12	All-terrain, 25 x 10.5-12, 4-ply
Instrumentation	Battery capacity indicator, Battery warning light	Electronic fuel gauge/hour meter, low-oil warning light	Electronic fuel gauge/hour meter, low oil warning light	Electronic fuel gauge/hour meter, low oil warning light, coolant high temp warning light
Cargo Bed Size	48.8 x 49.8 x 10.9 in (15.3 ft³) 123.8 x 126.4 x 27.6 cm		48.8 x 49.8 x 10.9 in 124 x 126.5 x 27.7 cm	48.8 x 49.8 x 10.9 in 124 x 126.5 x 27.7 cm
Flat Bed Size	46.9 x 48.3 in (119.1 x 122.7 cm)		-	-
Bed Height	29.8 in (75.6 cm)		33 in (83.8 cm)	33 in (83.8 cm)
Bed Capacity	500 lb (226.8 kg)		1,050 lb (476.3 kg)	800 lb (363.2 kg)
Total Vehicle Capacity	900 lb (408.2 kg)		1500 lb (680.4 kg)	1,700 lb (771.1 kg)
Seating Capacity	2		2	2
Overall Length	120.4 in (305.8 cm)		124.6 in (316.5 cm)	148.6 in (377.4 cm)
Overall Width	51.3 in (130.2 cm)		60 in (152.4 cm)	60 in (152.4 cm)
Overall Height	51.1 in (129.8 cm)		52.6 in (133.5 cm)	78.6 in (199.6 cm)
Wheelbase	78.5 in (199.4 cm)		88.7 in (225.3 cm)	88.7 in (225.3 cm)
Ground Clearance	6.4 in (16.3 cm)		7.3 in (18.5 cm)	8.3 in (21.1 cm)
Fuel Tank Capacity	-		6.5 gal (24.6 L)	6.5 gal (24.6 L)
Tread	36.5/41.3 in (92.7/104.8 cm)		48.8 in (124 cm)	48.8 in (124 cm)
Dry Weight (Less Batteries)	842 lb (381.9 kg)	910 lb (412.8 kg)	1,150 lb (521.6 kg)	1,764 lb (775.1 kg)
Outside Radius Circle	21.7 ft (6.6 m) dia		-	-
Turning Radius	10.8 ft (3.3 m)		13 ft (3.8 m)	13.8 ft (4.2 m)
Intersecting Aisle Radius	77 in (195.6 cm)		-	-
Speed Range	15-17 mph (24.1-27.4 km/h)		19 mph (30.6 km/h)	25 mph (40.2 km/h)
Vehicle Warranty	2-year, limited; 4-year limited battery warranty		2-year/2,000 hour limited	2-year/2,000 hour limited



CARRYALL 295 (4WD)

CARRYALL 295 SE (4WD)

- Rustproof, aircraft-grade aluminum chassis and tilt cargo box with flip-down tailgate
- Industry's best 2-year limited warranty
- 1450 lb (657.7 kg) total vehicle capacity with optional heavy-duty package
- Exclusive IntelliTrak™ — an automatic, full-time, 4-wheel drive system
- 4-link semi-independent rear suspension

- Safety features: Roll Over Protective Structure (ROPS), seat belts, headlights, and 4-wheel hydraulic disc brakes
- Choice of bench or bucket seats with adjustable driver's seat
- Automotive dash features glove box, cup-holders, storage spaces and tilt steering
- Maximum speed of 25 mph (40.2 km/h)

- Rustproof, aircraft-grade aluminum chassis and tilt cargo box with flip-down tailgate
- Industry's best 2-year limited warranty
- 1600 lb (725.7 kg) total vehicle capacity
- Exclusive IntelliTrak™ — an automatic, full-time, 4-wheel drive system
- 4-link semi-independent rear suspension

- Safety features: Roll Over Protective Structure (ROPS), seat belts, headlights, and 4-wheel hydraulic disc brakes
- Seating for four with bench in the back row and choice of bench or bucket seats with adjustable driver's seat in front row
- Automotive dash features glove box, cup-holders, storage spaces and tilt steering
- Maximum speed of 25 mph (40.2 km/h)

GAS		DIESEL		GAS		DIESEL	
Kawasaki 4-cycle, air-cooled, OHV, 675 cc, twin-cylinder industrial grade with full-pressure, spin-on oil filter		Kubota D722, liquid-cooled 719 cc, 3-cylinder industrial grade with full-pressure, spin-on oil filter		Kawasaki 4-cycle, air-cooled, OHV, 675 cc, twin-cylinder industrial grade with full-pressure, spin-on oil filter		Kubota D722, liquid-cooled 719 cc, 3-cylinder industrial grade with full-pressure, spin-on oil filter	
Wide ratio CVT; 3.7:1 low, 0.59:1 high IntelliTrak™ Automatic 4-wheel Drive		Wide ratio CVT; 3.7:1 low, 0.59:1 high IntelliTrak™ Automatic 4-wheel Drive		Wide ratio CVT; 3.7:1 low, 0.59:1 high IntelliTrak™ Automatic 4-wheel Drive		Wide ratio CVT; 3.7:1 low, 0.59:1 high IntelliTrak™ Automatic 4-wheel Drive	
20.1 hp (15.0 kW) rated @ 3400 RPM per SAE J1349		20.0 hp (15.0 kW) rated @ 3600 RPM per SAE J1995		20.1 hp (15.0 kW) rated @ 3400 RPM per SAE J1349		20.0 hp (15.0 kW) rated @ 3600 RPM per SAE J1995	
Automatic ground speed sensing		Automatic ground speed sensing		Automatic ground speed sensing		Automatic ground speed sensing	
5.39:1 forward, 7.79:1 reverse, 3.3:1 differential		5.39:1 forward, 7.79:1 reverse, 3.3:1 differential		5.39:1 forward, 7.79:1 reverse, 3.3:1 differential		5.39:1 forward, 7.79:1 reverse, 3.3:1 differential	
12-volt, 500 CCA		12-volt, 500 CCA		12-volt, 500 CCA		12-volt, 500 CCA	
Transistorized magneto		Compression		Transistorized magneto		Compression	
-		-		-		-	
Key		Key		Key		Key	
Rack and pinion with Tilt Steering		Rack and pinion with Tilt Steering		Rack and pinion with Tilt Steering		Rack and pinion with Tilt Steering	
Independent double A-arms with coil-over shocks		Independent double A-arms with coil-over shocks		Independent double A-arms with coil-over shocks		Independent double A-arms with coil-over shocks	
Semi-independent 4-link solid axle		Semi-independent 4-link solid axle		Semi-independent 4-link solid axle		Semi-independent 4-link solid axle	
4-wheel, hydraulic disc		4-wheel, hydraulic disc		4-wheel, hydraulic disc		4-wheel, hydraulic disc	
Automotive style		Automotive style		Automotive style		Automotive style	
-		-		-		-	
Tubular aluminum		Tubular aluminum		Tubular aluminum		Tubular aluminum	
GE Geloy high-impact, scratch-resistant, injection molded color		GE Geloy high-impact, scratch-resistant, injection molded color		GE Geloy high-impact, scratch-resistant, injection molded color		GE Geloy high-impact, scratch-resistant, injection molded color	
All aluminum		All aluminum		All aluminum		All aluminum	
Automotive finish		Automotive finish		Automotive finish		Automotive finish	
Headlights standard		Headlights standard		Headlights standard		Headlights standard	
2 in rear receiver		2 in rear receiver		2 in rear receiver		2 in rear receiver	
All-terrain, 25 x 10.5-12, 4-ply		All-terrain, 25 x 10.5-12, 4-ply		All-terrain, 25 x 10.5-12, 4-ply		All-terrain, 25 x 10.5-12, 4-ply	
Electronic fuel gauge/hour meter, low oil warning light		Electronic fuel gauge/hour meter, low oil warning light, coolant high temp warning light		Electronic fuel gauge/hour meter, Low oil warning light		Electronic fuel gauge/hour meter, low oil warning light, coolant high temp warning light	
48.8 x 49.8 x 10.9 in 124 x 126.5 x 27.7 cm		48.8 x 49.8 x 10.9 in 124 x 126.5 x 27.7 cm		48.8 x 49.8 x 10.9 in 124 x 126.5 x 27.7 cm		48.8 x 49.8 x 10.9 in 124 x 126.5 x 27.7 cm	
-		-		-		-	
33 in (83.8 cm)		33 in (83.8 cm)		33 in (83.8 cm)		33 in (83.8 cm)	
800 lb (363.2 kg); 1,050 lb (476.3 kg) upgrade		800 lb (363.2 kg); 1,050 lb (476.3 kg) upgrade		800 lb (363.2 kg); 1,050 lb (476.3 kg) upgrade		800 lb (363.2 kg); 1,050 lb (476.3 kg) upgrade	
1,200 lb (544.3 kg); 1,450 lb (657.7 kg) upgrade		1,600 lb (725.8 kg)		1,600 lb (725.8 kg)		1,600 lb (725.8 kg)	
2		4		4		4	
124.6 in (316.5 cm)		157.6 in (400.3 cm)		157.6 in (400.3 cm)		157.6 in (400.3 cm)	
60 in (152.4 cm)		60 in (152.4 cm)		60 in (152.4 cm)		60 in (152.4 cm)	
78.6 in (199.6 cm)		78.6 in (199.6 cm)		78.6 in (199.6 cm)		78.6 in (199.6 cm)	
88.7 in (225.3 cm)		114 in (225.3 cm)		114 in (225.3 cm)		114 in (225.3 cm)	
8.3 in (21.1 cm)		8.3 in (21.1 cm)		8.3 in (21.1 cm)		8.3 in (21.1 cm)	
6.5 gal (24.6 L)		6.5 gal (24.6 L)		6.5 gal (24.6 L)		6.5 gal (24.6 L)	
48.8 in (124 cm)		48.8 in (124 cm)		48.8 in (124 cm)		48.8 in (124 cm)	
1,339 lb (599 kg)		1,475 lb (669.1 kg)		1,605 lb (728 kg)		1,786 lb (810.1 kg)	
-		-		-		-	
13.8 ft (4.2 m)		13.8 ft (4.2 m)		17.0 ft (5.2 m)		17.0 ft (5.2 m)	
-		-		-		-	
25 mph (40.2 km/h)		25 mph (40.2 km/h)		25 mph (40.2 km/h)		25 mph (40.2 km/h)	
2-year/2,000 hour limited		2-year/2,000 hour limited		2-year/2,000 hour limited		2-year/2,000 hour limited	

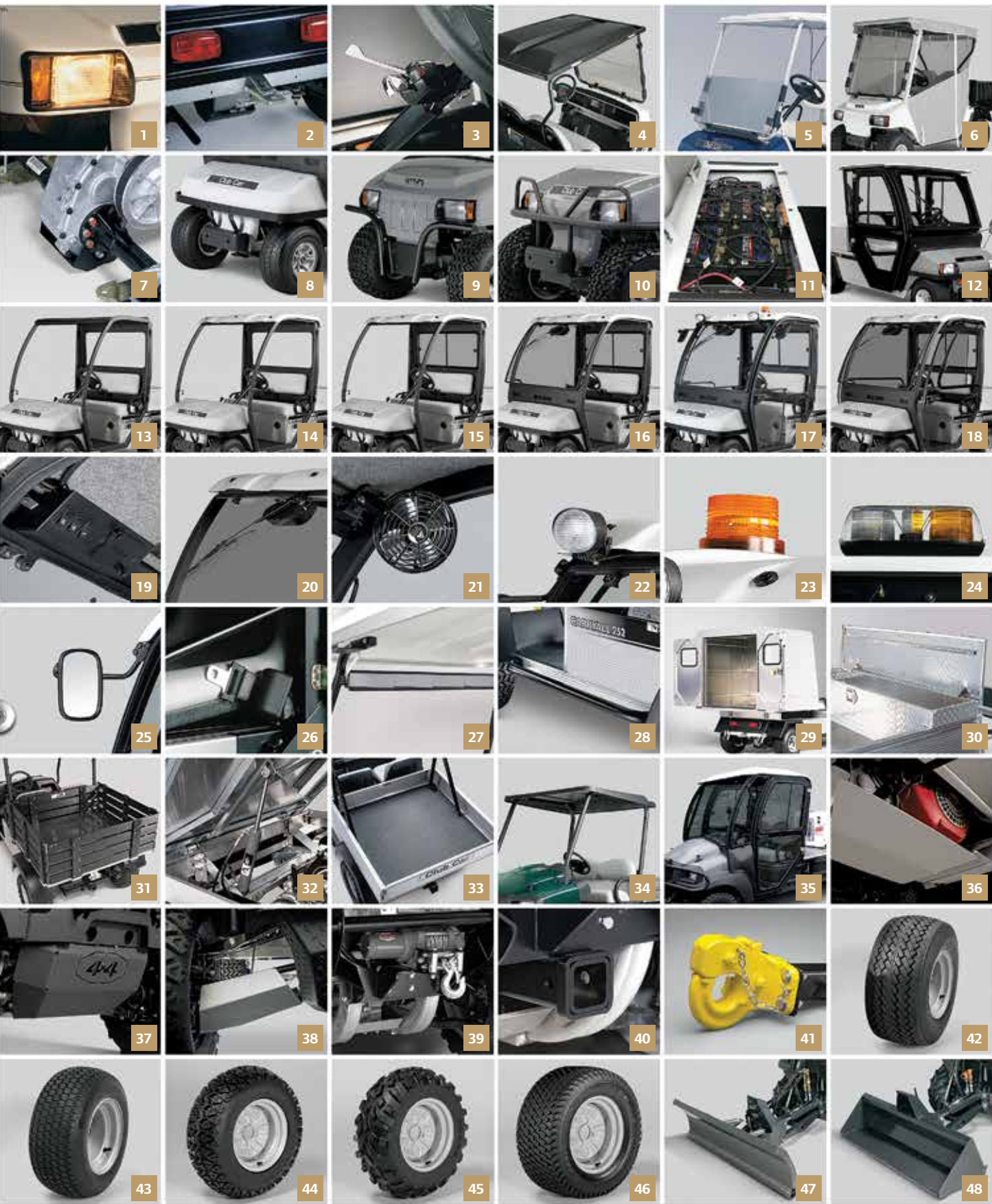
OPTIONS & ACCESSORIES 1000 JOBS. FOR YOUR NEXT

When we say *1000 jobs, only one Carryall*, we mean it. Every Club Car Carryall model is tough enough to haul whatever you throw at it or in it. And with hundreds of accessories to choose from, your next thousand jobs will be a cinch.

ACCESSORY	CARRYALL																
	242		1		2 / 2 Plus		6		252		295		295		295 SE		295 Intellitach
	2WD		2WD		2WD		2WD		2WD		2WD		4WD		4WD		4WD
	ELECTRIC	GAS	ELECTRIC	GAS	ELECTRIC	GAS	ELECTRIC	GAS	ELECTRIC	GAS	GAS	GAS	DIESEL	GAS	DIESEL	DIESEL	
1	Headlights	S	S	0	0	0,P	0,P	-	-	S	S	S	S	S	S	S	S
2	Lights (Head, Tail, Brake)/Horn	0	0	0	0	0,P	0,P	S	S	0	0	0	0	0	0	0	0
3	Deluxe lights	0	0	0	0	0,P	0,P	0	0	0	0	0	0	0	0	0	0
4	Canopy Top	0	0	0	0	0	0	0	0	0	0	-	-	-	-	-	-
5	Fold-down Windshield	0	0	0	0	0	0	0	0	0	0	-	-	-	-	-	-
6	Enclosure white or gray	0	0	0	0	0	0	0	0	0	0	-	-	-	-	-	-
7	Differential Guard	0	0	0	0	0,P	0,P	0,P	0,P	S	S	0	0	0	0	0	0
8	HD Bumper	0	0	0	0	S	S	S	S	-	-	-	-	-	-	-	-
9	Brush Guard, 242	0	0	-	-	-	-	-	-	-	-	-	-	-	-	-	-
10	Brush Guard	-	-	0	0	0	0	0	0	S	S	-	-	-	-	-	-
11	Single Point Watering System	0	-	0	-	0	-	0	-	0	-	-	-	-	-	-	-
12	Standard Cab	-	-	0	0	0	0	0	0	0	0	-	-	-	-	-	-
13	Modular Cab Frame	-	-	0	0	0	0	0	0	0	0	-	-	-	-	-	-
14	Top	-	-	0	0	0	0	0	0	0	0	-	-	-	-	-	-
15	Rear Sliding Window	-	-	0	0	0	0	0	0	0	0	-	-	-	-	-	-
16	Front Vented Windshield	-	-	0	0	0	0	0	0	0	0	-	-	-	-	-	-
17	Acrylic Doors	-	-	0	0	0	0	0	0	0	0	-	-	-	-	-	-
18	Glass Doors	-	-	0	0	0	0	0	0	0	0	-	-	-	-	-	-
19	Accessories Console	-	-	0	0	0	0	0	0	0	0	-	-	-	-	-	-
20	Front Wiper	-	-	0	0	0	0	0	0	0	0	-	-	-	-	-	-
21	Cooling Fan	-	-	0	0	0	0	0	0	0	0	-	-	-	-	-	-
22	Halogen Lights	-	-	0	0	0	0	0	0	0	0	-	-	-	-	-	-
23	Strobe Light	-	-	0	0	0	0	0	0	0	0	-	-	-	-	-	-
24	Security Light Bar	-	-	0	0	0	0	0	0	0	0	-	-	-	-	-	-
25	Side Mirrors	-	-	0	0	0	0	0	0	0	0	-	-	-	-	-	-
26	Seat Belts (ROPS Requirement)	-	-	0	0	0	0	0	0	0	0	-	-	-	-	-	-
27	Rearview Wink Mirror	0	0	0	0	0	0	0	0	0	0	0	0	0	0	0	0
28	Nerf Bars	0	0	-	-	-	-	-	-	0	0	0	0	0	0	0	0
29	Industrial Van Box	-	-	0	0	0	0	0	0	0	0	-	-	-	-	-	-
30	Tool Boxes	-	-	0	0	0	0	0	0	0	0	-	-	-	-	-	-
31	Stake-side Kit	-	-	0	0	0	0	0	0	0	0	0	0	0	0	0	0
32	Electric Bed Lift	-	-	0	0	0	0	0	0	0	0	0	0	0	0	0	0
33	Bed Mat	-	-	0	0	0	0	0	0	0	0	0	0	0	0	0	0
34	Canopy Top	-	-	-	-	-	-	-	-	-	-	0	0	0	0	0	0
35	AWD Cab	-	-	-	-	-	-	-	-	-	-	0	0	0	-	-	0
36	Engine Skid Plate	-	-	-	-	-	-	-	-	-	-	0	0	0	0	0	0
37	Front Skid Plate	-	-	-	-	-	-	-	-	-	-	0	0	0	0	0	0
38	CV Boot Guards, Metal	-	-	-	-	-	-	-	-	-	-	0	0	0	0	0	0
39	2500 lb Winch	-	-	-	-	-	-	-	-	-	-	0	0	0	0	0	0
40	2 in Receiver	-	-	-	-	-	-	-	-	-	-	0	0	0	0	0	0
41	Pintle Hitch	0	0	0	0	0	0	0	0	0	0	0	0	0	0	0	0
42	Premium Tires	-	-	S	S	S	S	S	S	-	-	-	-	-	-	-	-
43	Extra Traction Tires, Rear	-	-	0	0	S	S	S	S	-	-	-	-	-	-	-	-
44	All Terrain Tires	S	S	-	-	-	-	-	-	S	S	0	S	S	S	S	S
45	Mud Tires	-	-	-	-	-	-	-	-	-	-	0	0	0	0	0	0
46	Turf/Street Tires	-	-	-	-	-	-	-	-	-	-	S	-	-	-	-	-
47	Intellitach™ Plow Blade	-	-	-	-	-	-	-	-	-	-	-	-	-	-	-	0
48	Intellitach™ Front Bucket	-	-	-	-	-	-	-	-	-	-	-	-	-	-	-	S
49	Standard Colors	S	S	S	S	S	S	S	S	S	S	S	S	S	S	S	S
50	Premium Colors	0	0	0	0	0	0	0	0	0	0	0	0	0	0	0	0

(S) Standard Equipment (O) Optional Equipment (P) Premium Package (-) Not Available

Not all accessories available in all markets. Check with your local Club Car representative for details and availability.



Beige
White
Grey
Dark Grey
49
Green
Pacific Blue
Classic Blue
Burgundy
Red
Black
50





Ingersoll Rand (NYSE:IR) is a \$14 billion global business driven by a purpose to advance the quality of life by creating and sustaining safe, comfortable and efficient environments in commercial, residential and industrial markets. Our people and our market-leading brands, including Club Car®, Ingersoll Rand®, Thermo King® and Trane®, are committed to helping meet growing, critical needs for clean and comfortable air, secure homes and buildings, safe and fresh food, energy efficiency and sustainable business practices around the world.



Visit our website!



It's good to be green!

clubcar.com ingersollrand.com